



Sheraton

LE CENTRE
MONTREAL HOTEL

Le Centre Sheraton Montréal Hôtel

1201, boulevard René-Lévesque Ouest
Montréal (Québec) H3B 2L7

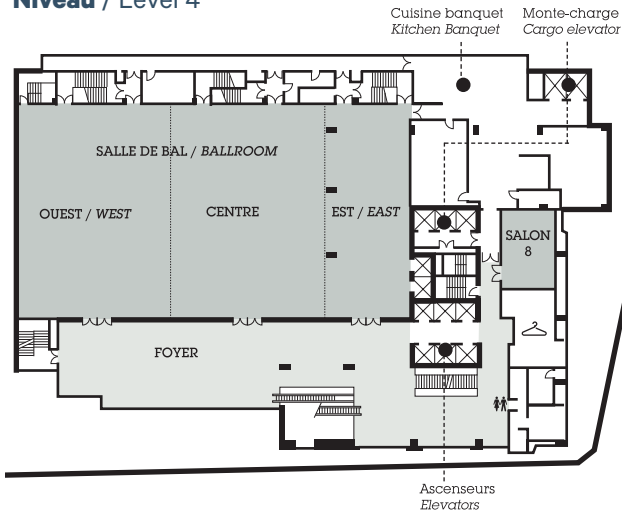
Téléphone pour les groupes / Group desk : 514-878-4040

Télécopieur pour les groupes / Group fax : 514-878-2305

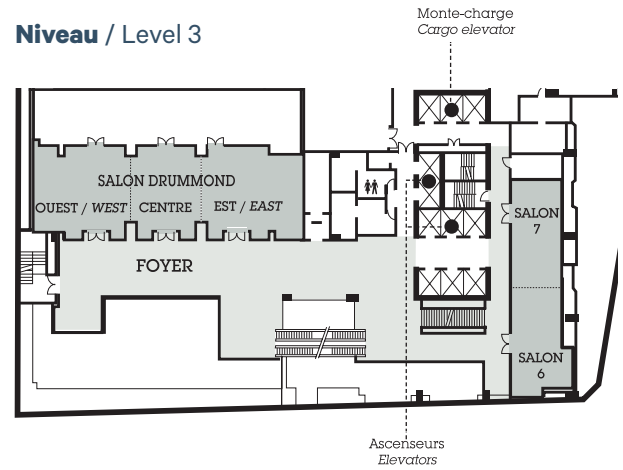
Courriel ventes / Sales e-mail : ventes.00463@sheraton.com

sheraton.com/lecentre

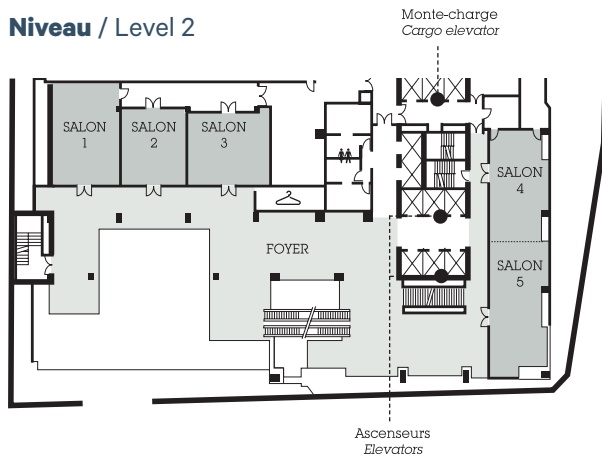
Niveau / Level 4



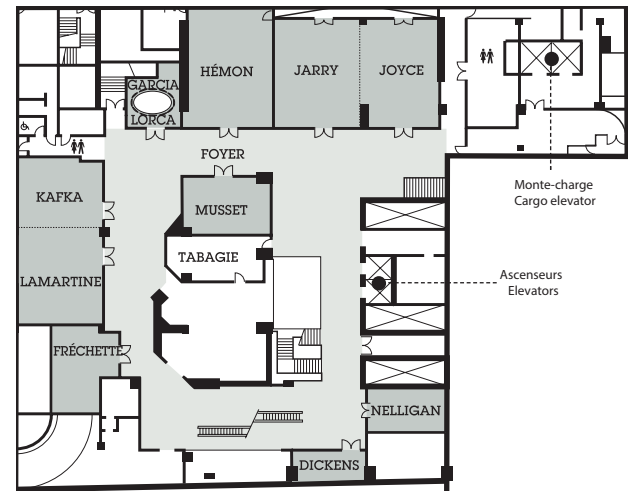
Niveau / Level 3



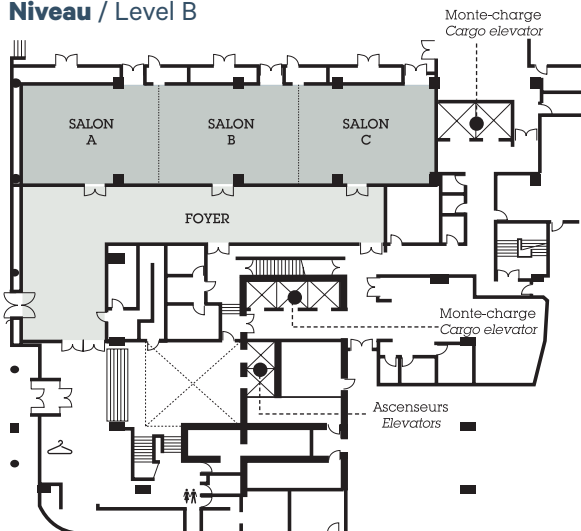
Niveau / Level 2



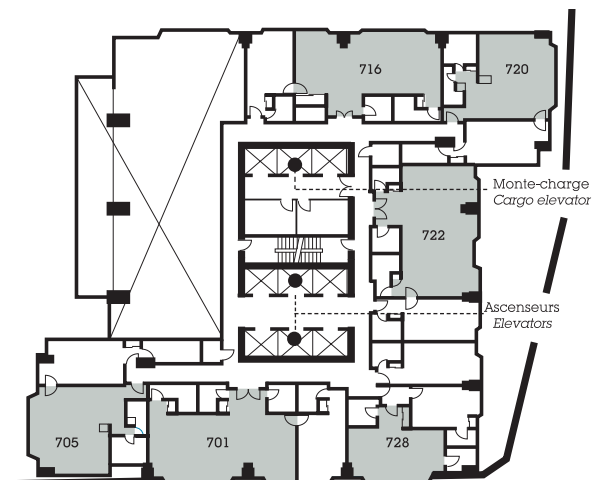
Niveau / Level A



Niveau / Level B



Niveau / Level 7





Sheraton[®]

LE CENTRE
MONTREAL HÔTEL

Tableau de capacités / Capacity Chart



	Étage Level	Dimensions Dimensions	Pieds carrés Square feet	Mètres carrés Square metres	Hauteur du plafond Ceiling height	Style banquet Banquet seating	Réception Reception	Style école Schoolroom seating	Style théâtre Theatre seating	Style carré ouvert Hollow square	Style U U-shaped	Style conférence Conference seating	Kiosque 8'x10' Booth 8x10'	Tableau d'exposition Poster board
Niveau 4 / Level 4														
Salle de bal	4	154' 3" x 83' 1"	12 885	1197	18' 6"	1 250	1 835	897	1 770	-	-	-	80	270
Salle de bal centre & ouest	4	83' 4" x 120' 10"	10 043	933	18' 6"	900	1 431	748	1 496	-	-	-	68	184
Salle de bal centre & est	4	83' 4" x 96' 5"	7 803	725	18' 6"	680	1 112	489	982	-	-	-	41	177
Salle de bal ouest	4	83' 4" x 60' 10"	5 042	468	18' 6"	440	722	345	660	116	94	76	28	92
Salle de bal centre	4	83' 4" x 59' 8"	4 968	462	18' 6"	440	722	345	660	116	94	76	28	92
Salle de bal est	4	83' 4" x 36' 5"	2 803	260	18' 6"	230	393	165	308	82	76	74	14	85
Foyer salle de bal	4	-	5 087	473	16' 10"	210	771	-	-	-	-	-	18	66
Salon 8	4	30' 6" x 19' 9"	609	57	9' 10"	50	86	32	69	32	27	26	-	-
Niveau 3 / Level 3														
Salon Drummond	3	39' 10" x 107' 10"	3 680	342	9' 0"	340	526	200	433	-	-	-	20	68
Salon Drummond ouest & centre	3	39' 10" x 66' 10"	2 285	212	9' 0"	220	326	114	269	94	76	67	-	-
Salon Drummond centre & est	3	39' 10" x 69' 0"	2 366	220	9' 0"	220	338	118	278	98	79	70	-	-
Salon Drummond ouest	3	37' 7" x 38' 10"	1 336	124	9' 0"	130	191	66	157	55	45	39	-	-
Salon Drummond centre	3	37' 7" x 28' 1"	967	90	9' 0"	80	138	48	114	40	32	28	-	-
Salon Drummond est	3	37' 7" x 40' 11"	1 417	132	9' 0"	130	202	72	167	58	47	42	-	-
Foyer Salon Drummond	3	-	2 222	206	9' 0"	140	314	-	-	-	-	-	15	50
Salon 6	3	32' 5" x 19' 10"	662	62	9' 1"	50	94	40	70	30	25	26	-	-
Salon 7	3	34' 11" x 19' 10"	695	65	9' 1"	60	99	44	80	36	31	30	-	-
Salon 6 & 7	3	67' 7" x 19' 10"	1 359	126	9' 1"	120	193	81	175	66	61	60	13	27
Niveau 2 / Level 2														
Salon 1	2	31' 11" x 26' 8"	1 053	98	10' 8"	70	152	56	113	40	32	28	-	-
Salon 2	2	26' 5" x 23' 11"	633	59	11' 9"	50	70	30	60	28	22	16	-	-
Salon 3	2	32' 9" x 22' 8"	743	69	10' 2"	60	105	36	88	36	30	28	-	-
Salon 4	2	32' 5" x 19' 7"	692	64	8' 10"	50	99	39	64	34	29	28	-	-
Salon 5	2	39' 10" x 20' 7"	909	84	8' 10"	60	129	55	100	42	37	36	-	-
Salon 4 & 5	2	75' 11" x 19' 7"	1 603	149	8' 10"	130	227	93	179	70	65	68	-	-
Niveau A / Level A														
Salon Dickens	A	22' 1" x 11' 11"	235	22	7' 4"	-	-	-	23	-	-	10	-	-
Salon Fréchette	A	26' 2" x 28' 3"	565	53	8' 7"	-	-	-	-	-	-	12	-	-
Salon Garcia-Lorca	A	19' 7" x 23' 8"	378	35	7' 3"	-	-	-	-	-	-	10	-	-
Salon Hémon	A	24' 0" x 41' 0"	984	91	8' 10"	80	160	50	100	36	37	32	10	24
Salon Jarry	A	27' 4" x 40' 1"	1 096	102	8' 10"	80	160	51	98	38	32	30	-	-
Salon Joyce	A	29' 0" x 40' 1"	1 016	94	8' 10"	80	130	51	98	38	32	30	-	-
Salon Jarry & Joyce	A	56' 4" x 40' 1"	2 112	196	8' 10"	180	290	111	221	54	45	40	18	46
Salon Kafka	A	30' 3" x 25' 5"	759	71	8' 7"	50	105	24	60	22	17	16	-	-
Salon Lamartine	A	30' 4" x 30' 6"	915	85	8' 7"	50	105	24	60	22	17	16	-	-
Salon Kafka & Lamartine	A	30' 4" x 55' 11"	1 675	156	8' 7"	110	210	75	132	52	47	46	12	27
Salon Musset	A	35' 7" x 23' 5"	820	76	8' 10"	70	115	42	66	28	24	24	5	13
Salon Nelligan	A	27' x 9'	236	22	8' 2"	-	-	-	-	-	-	10	-	-
Niveau B / Level B														
Salon A	B	36' 0" x 30' 2"	1 088	101	9' 11"	100	152	66	140	44	36	32	-	-
Salon B	B	36' 0" x 30' 2"	1 100	102	9' 11"	100	152	66	140	44	36	32	-	-
Salon C	B	36' 0" x 30' 2"	1 090	101	9' 11"	100	152	66	140	44	36	32	-	-
Salon A & B	B	72' 0" x 30' 2"	2 197	204	9' 11"	200	304	132	280	-	-	-	-	-
Salon B & C	B	72' 0" x 30' 2"	2 198	204	9' 11"	200	304	132	280	-	-	-	-	-
Salon ABC	B	108' 5" x 30' 1"	3 283	305	9' 11"	330	460	180	392	-	-	-	18	60
Foyer	B	-	2 222	206	9' 4"	180	314	-	-	-	-	-	12	41
Niveau 7 / Level 7														
Suite Hospitalité large (701-716-722)	7	37' 11" x 18' 6"	775	72	9' 6"	50	75	32	66	26	23	34	-	-
Suite Hospitalité medium (705-720)	7	25' 1" x 19' 3"	556	52	9' 6"	30	50	30	48	18	15	22	-	-
Suite Hospitalité petite / small (728)	7	25' 4" x 11' 9"	384	36	9' 6"	20	35	10	20	12	10	20	-	-